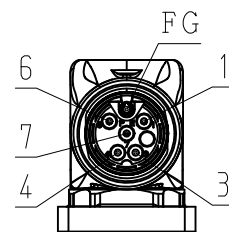


DWG. NO. 900-180-729

RoHS **CE**

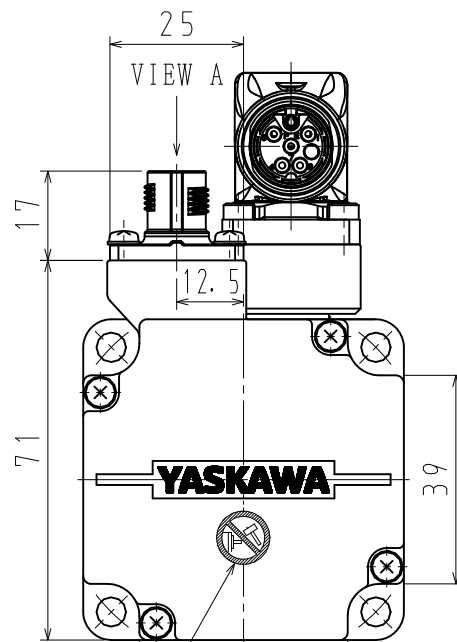
MOTOR TERMINAL CONNECTION

1	BRAKE
3	PHASE U
4	PHASE V
6	BRAKE
7	PHASE W
FG	FRAME GROUND
CON. CASE	FRAME GROUND



VIEW B

RECEPTACLE SIZE:M17
HOUSING:ST-5EP1N8AA500S
MAKER:PHOENIX CONTACT

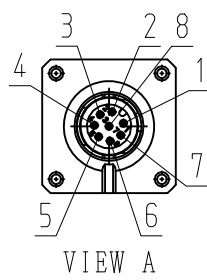


NAME PLATE

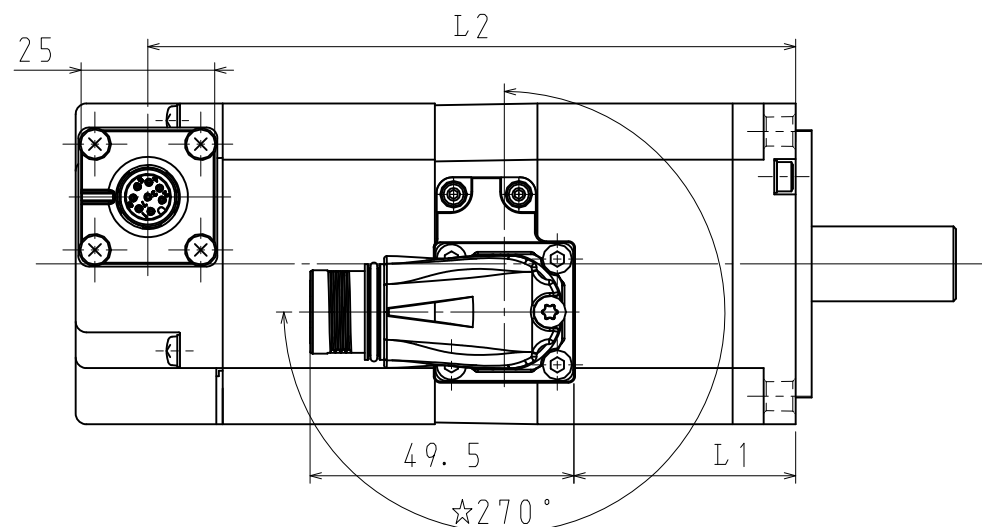
ENCODER

ENCODER TERMINAL CONNECTION

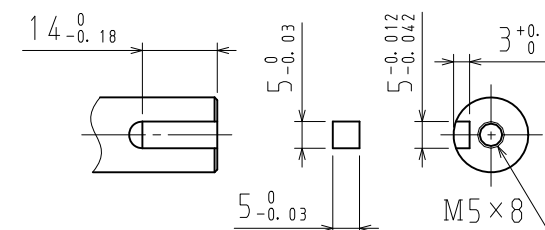
1	PG5V
2	PG0V
3	FRAME GROUND
4	BAT (+)
5	BAT (-)
6	DATA (+)
7	DATA (-)
8	-
CON. CASE	FRAME GROUND



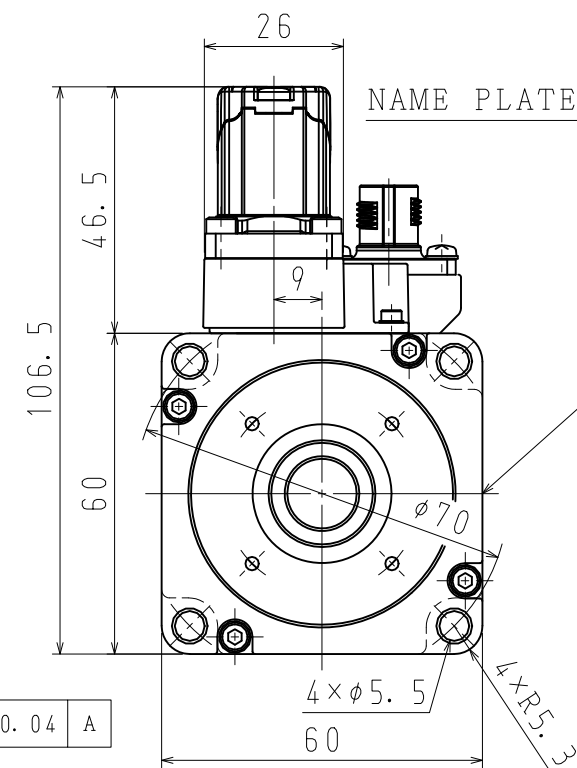
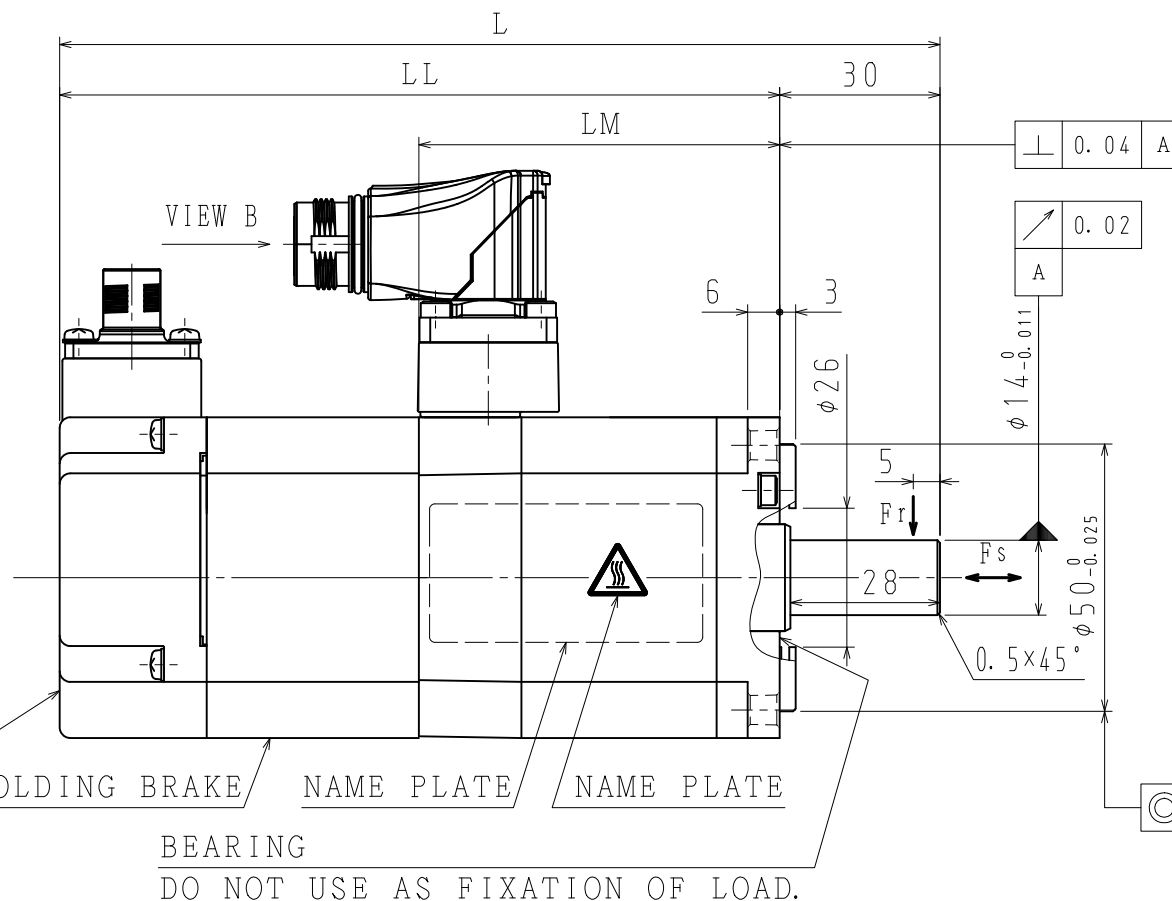
RECEPTACLE SIZE:M12
HOUSING:SACC-MSQ-M12MS-25-3, 2 SCO
MAKER:PHOENIX CONTACT



SHAFT TYPE
(CASE OF ITEM NO. 2, 4)



ITEM NO. 2 AND 4 SUPPLIES A KEY.



NOTES

1. ALL DIMENSIONS ARE IN MILLIMETERS.
2. MOTOR SPECIFICATIONS :900-172-604
3. ENCODER SPECIFICATIONS:900-172-501 (24BIT ABSOLUTE)
4. HOLDING BRAKE CANNOT BE USED TO STOP MOTOR.
5. VIBRATION:15 μ m OR BELOW AT RATED SPEED.
6. MOTOR CABLE AND ENCODER CABLE ARE OPTIONAL.
7. READ AND UNDERSTAND DOCUMENT PACKED WITH MOTOR (SAFETY PRECAUTIONS), AND BE CAREFUL USING MOTOR.
8. DEGREES OF PROTECTION:IP67 EXCEPT FOR SHAFT OPENING. MUST USE SPECIFIED CONNECTORS FOR MOTOR.
9. AT THE TIME OF DELIVERY OF MOTOR, EACH OF CONNECTORS ARE ATTACHED PROTECTIVE PARTS. PLEASE REMOVE THEM BEFORE ATTACHING CABLES.

10. DO NOT TOUCH EACH OF CONNECTOR PINS DIRECTLY. IT CAUSES FAILURE.
11. MOTOR CONNECTOR COULD BE TURNED IN THE RANGE OF \star WITHIN 10 TIMES.

ITEM NO.	TYPE	SHAFT TYPE	L (mm)	LL (mm)	LM (mm)	L1 (mm)	L2 (mm)	RATED OUTPUT (W)	RATED TORQUE (N・m)	TIME RATING	RATED SPEED (min ⁻¹)	VOLTAGE (V rms)	RATED CURRENT (A rms)	THERMAL CLASS	WEIGHT (kg)	ALLOWABLE RADIAL LOAD Fr (N)	ALLOWABLE THRUST LOAD Fs (N)
1	SGM7A-02D7F2C	STRAIGHT	148.5	118.5	51.2	25	105	200	0.637	CONT.	3000	400 (3PHASE)	1.2	B	1.5	245	74
2	SGM7A-02D7F6C	KEY+TAP											1.2				
3	SGM7A-04D7F2C	STRAIGHT	165	135	67.2	41.5	121.5	400	1.27				1.2		1.9		
4	SGM7A-04D7F6C	KEY+TAP															

RATED OUTPUT (W)	HOLDING BRAKE SPECIFICATIONS			
	MOMENT OF INERTIA GD ² /4 (kg·m ²)	HOLDING TORQUE (N·m)	RATED VOLTAGE	CAPACITY (W)
200	7×10 ⁻⁶	0.637	DC24V ±10%	6
400		1.27		

DRWN. S. KAMIJO
CHKD. T. HIROSE
APRV. K. AOKI

YASKAWA

TITLE AC SERVOMOTOR Σ -7 SERIES
SGM7A MODEL 200, 400W

DRWN. DATE JUN. 06, '15
DWG. NO. 900-180-729
REV.

SIZE A3