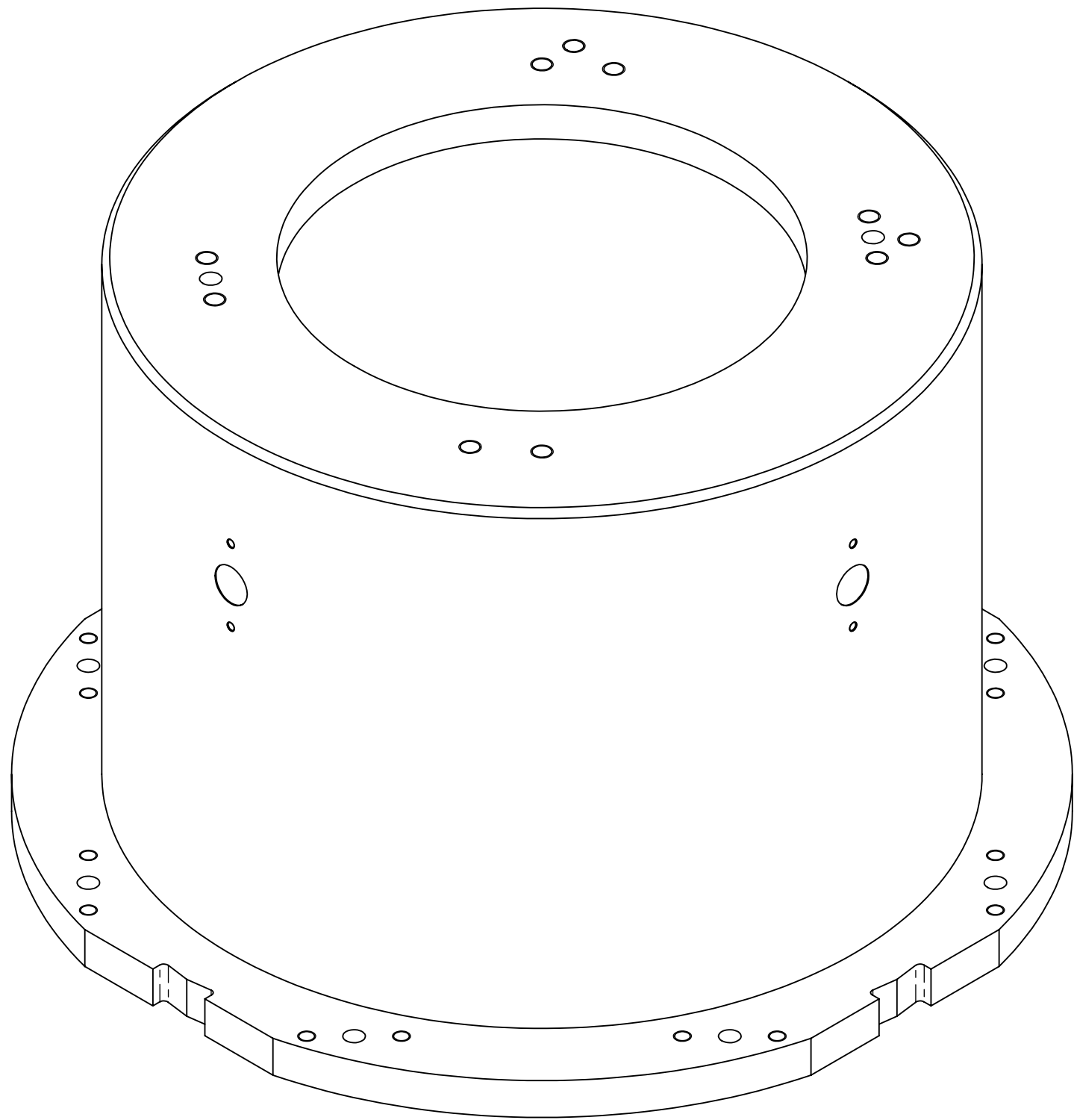
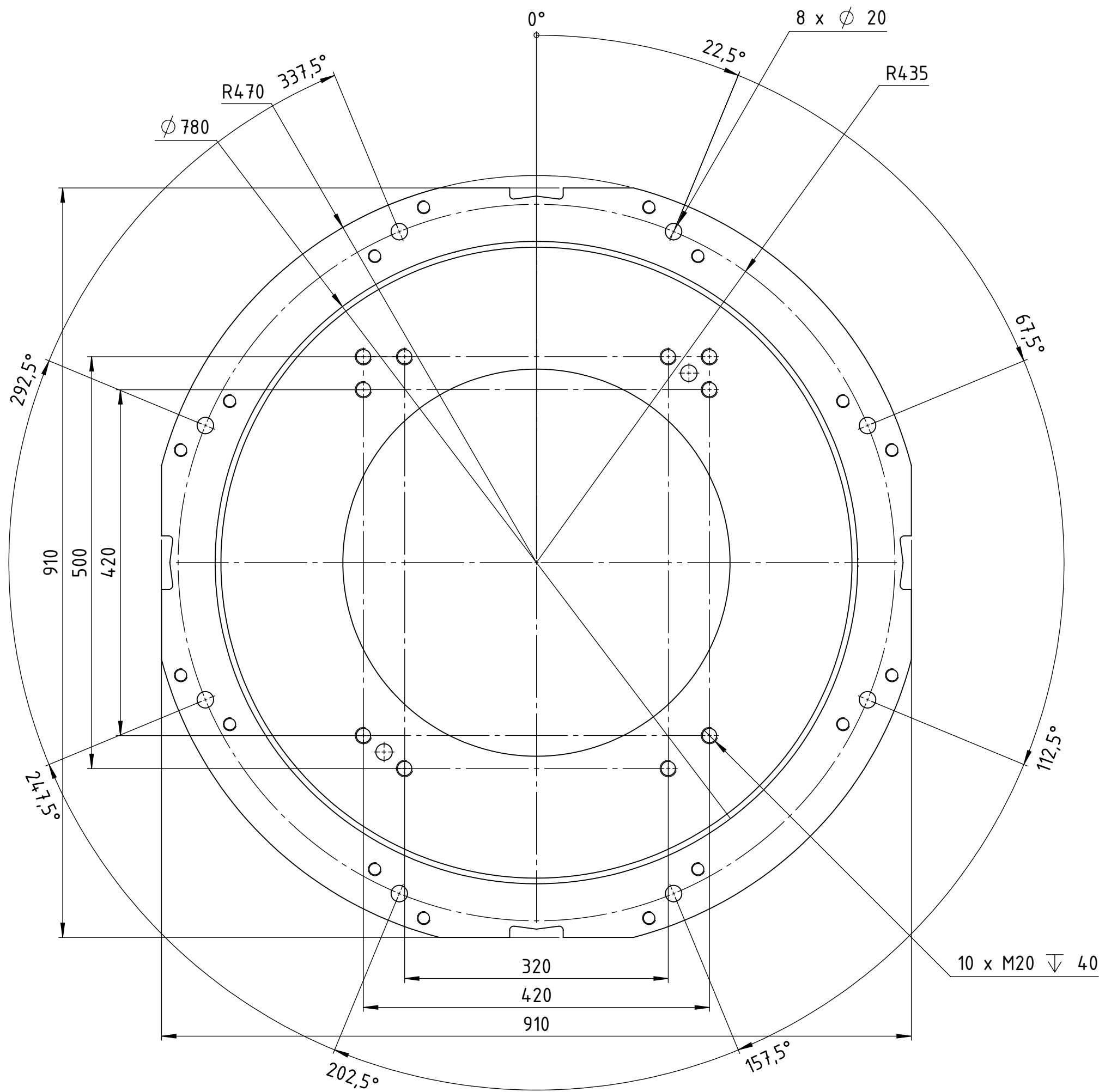
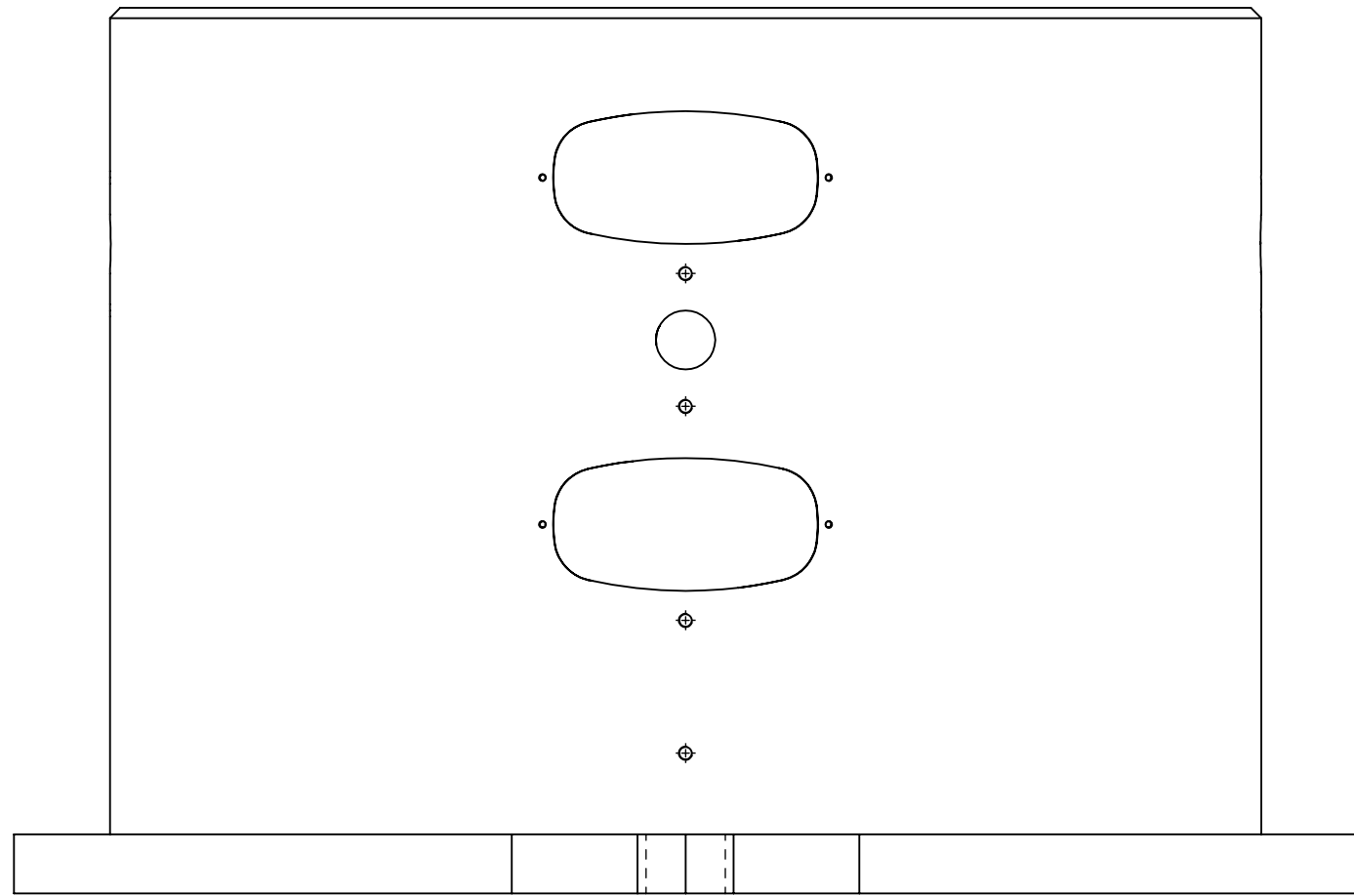
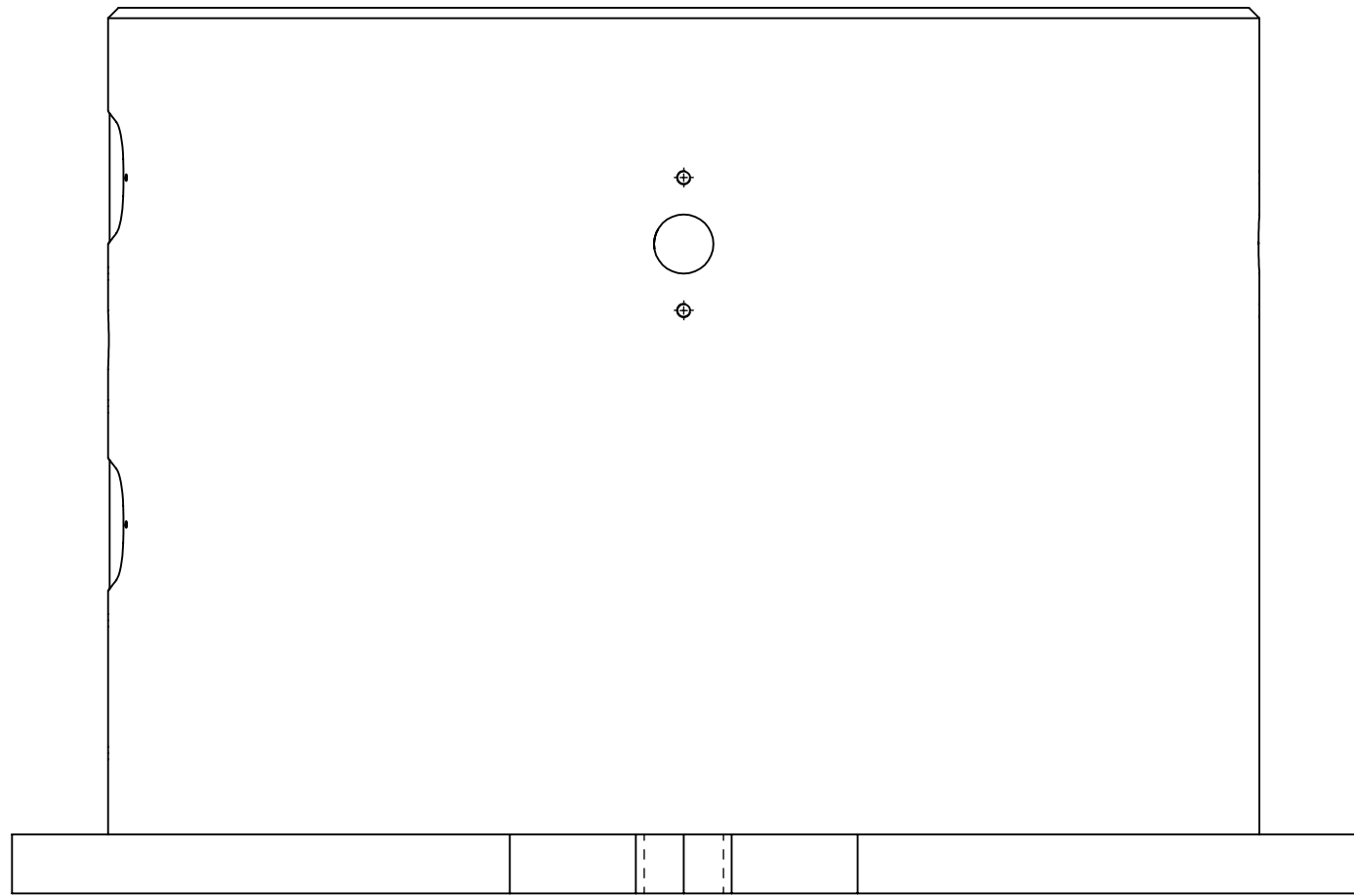
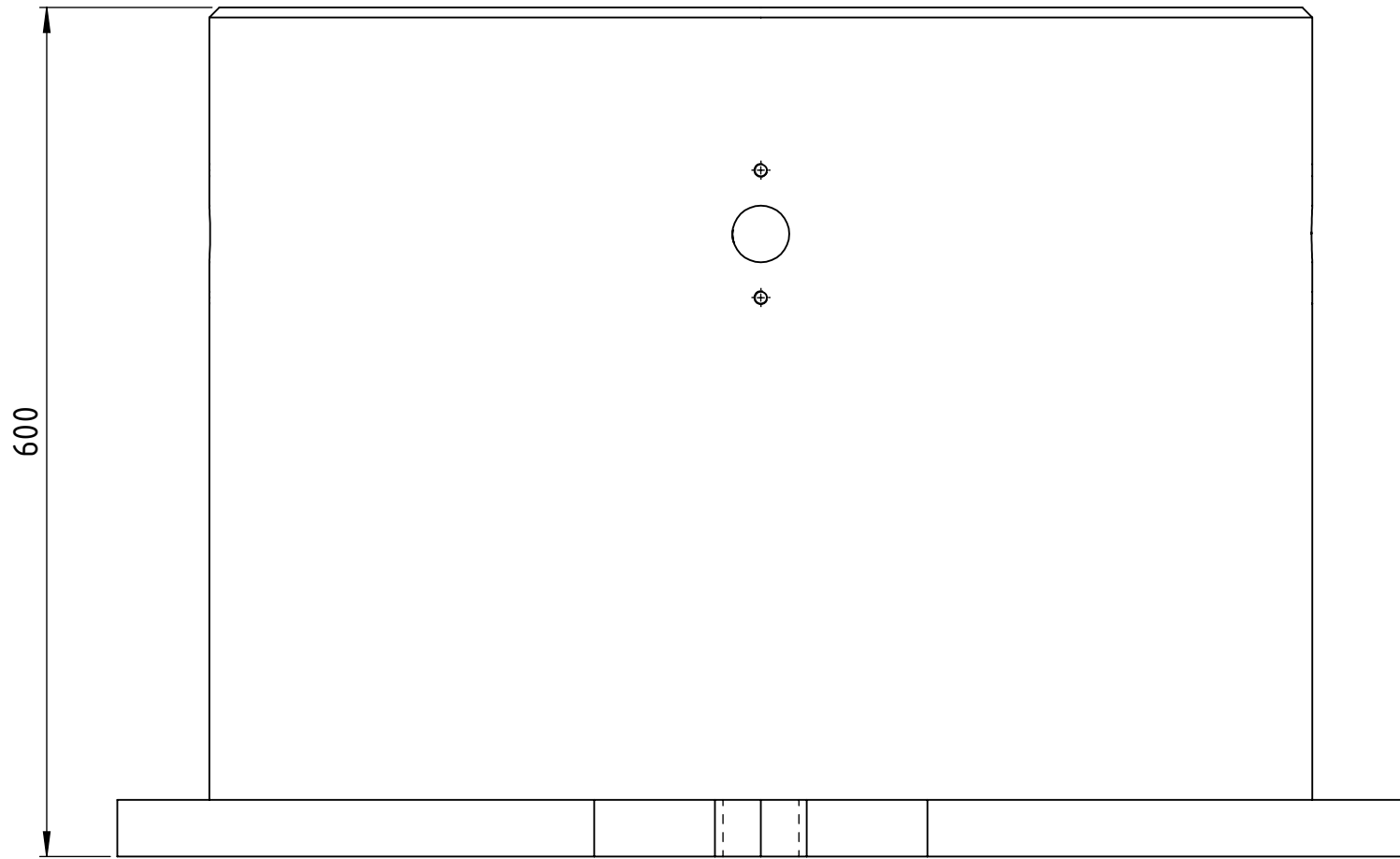
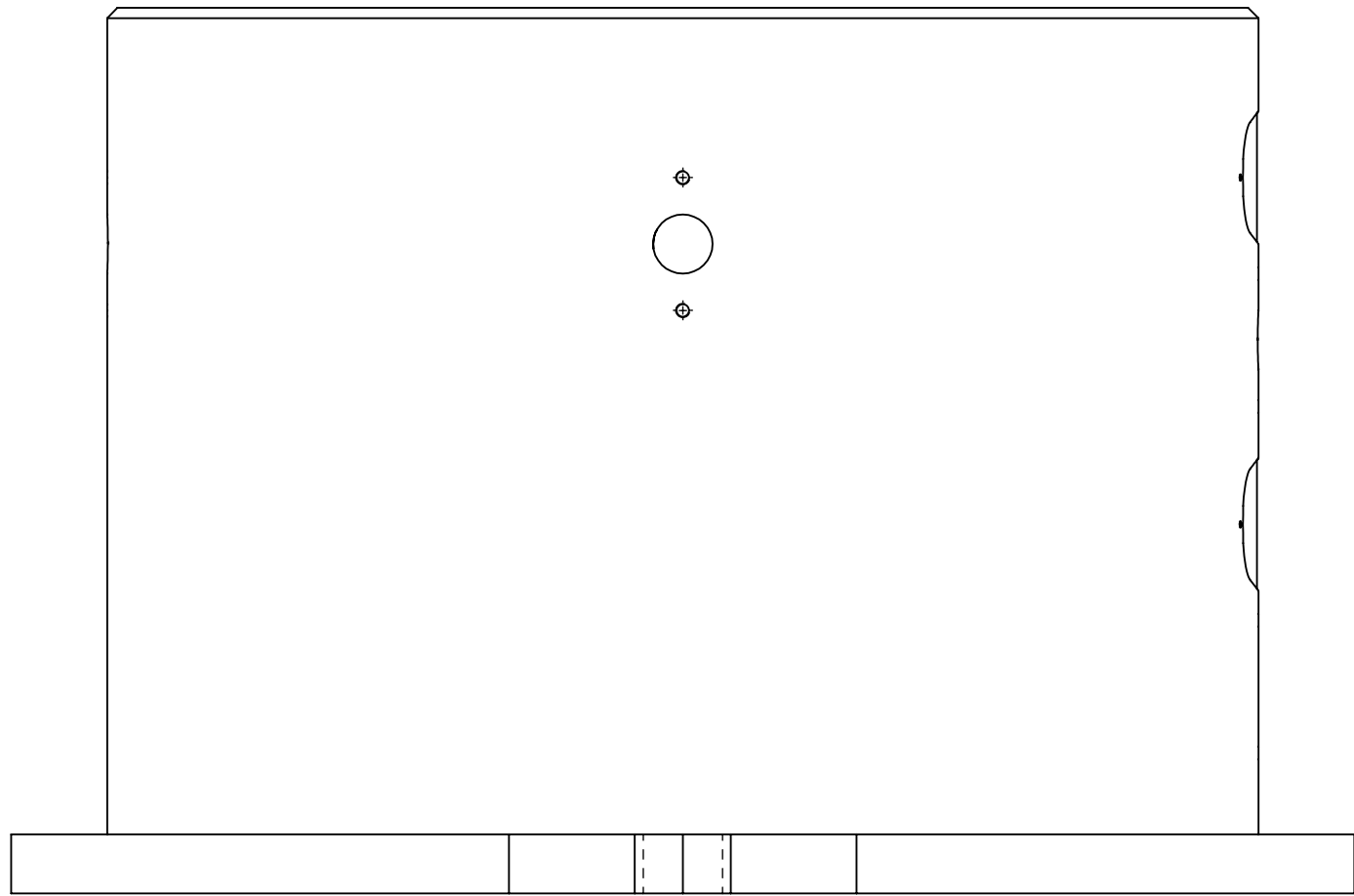


The reproduction, distribution and utilization of this document as well as the communication of its content to third parties without the written permission of YASKAWA EUROPE B.V. is prohibited. All rights reserved in the event of a patent, utility model or design.



rev	revision text	rev date	rev by	appr. date	appr. by
01	modified tolerances	2023-01-10	MichNaeb	2023-01-10	MichNaeb
02	general simplification	2023-02-06	AndLoes	2023-02-10	MichNaeb

where nothing else is indicated tolerances: DIN ISO 2768-mS welding: DIN EN ISO 15920-A no sharp edges	status: Released		dimension: weight: 195,007 kg	
	SAP EMEA no:	SAP AH no:	YASKAWA www.yaskawa.eu.com	
	title / description: robot stand P-600		created: 2022-02-04 drawn: 2022-02-04 approved: 2022-02-07	sheet: A1
	drawing-no.: 00000130138-100		revision: 03	15 4/5